

Awning Accessories

LIGHTING	
Thule LED Strip	98
Thule LED Strip Sideways	99
Thule LED Mounting Rail TO 6300/6200/9200	100
Thule Tent LED Mounting Rail TO 6300/6200	103
Thule Tent LED Mounting Rail TO 5200	104

WIND PROTECTION	
Thule Tension Rafter G2	105
Thule Tension Arm Set TO 5200 V2	106
Thule Tension Arm Set TO 6300	106
Thule Fabric Clamps	107
Thule 3rd Support Leg	107
Thule Hold Down Kit	108
Thule Hold Down Side Strap Kit	108

MOTORISATION	
Thule Motor Kit TO 5200	109
Thule Motor Kit TO 6300	110
Thule Motor Kit 230V EM TO 8000/9200	111

SEALINGS	
Thule Sealing Rubber	113
Thule Gutter	113
Thule EPDM Sealing	114

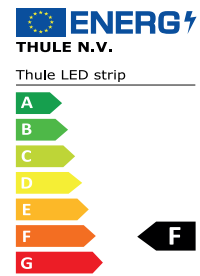
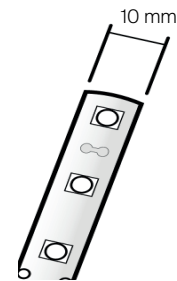
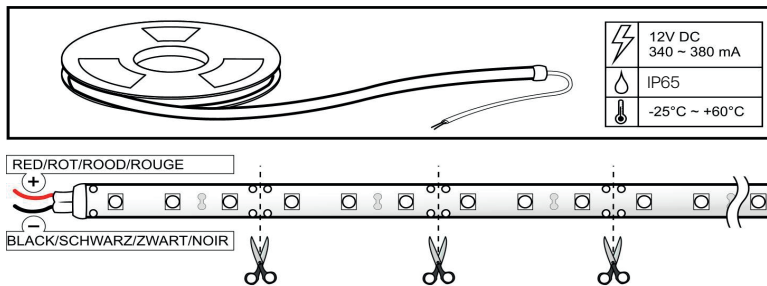
MAINTENANCE	
Thule PVC Cleaner	114
Thule Repair Patch	115

Thule LED Strip



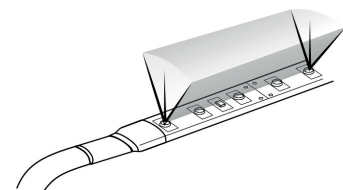
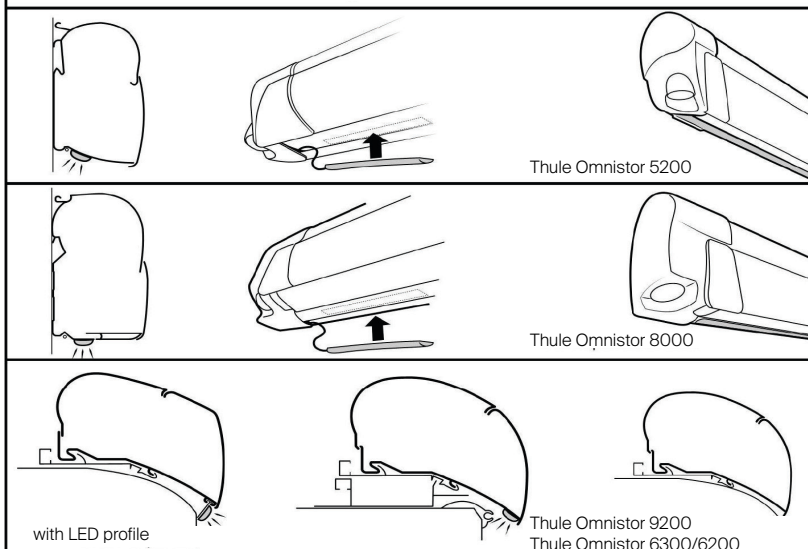
INFO

- Flexible white LED strip, delivered with high quality 3M tape on the back
- Working voltage 12 VDC
- Power consumption 340-380 mA per meter
- 60 power LEDs per meter
- 1 meter connection cable included
- Warm white light with light starkness up to 300 Lumen
- Suitable for outdoor usage: waterproof IP65
- Can be shortened each 5 cm (possible to solder cables on cutting points)
- Can be taped on most standard even materials and surfaces
- Can also be used inside the vehicle to create more light
- CCT = 3500K



		Weight	kWh/1000h
307135	Thule LED Strip - 4.00 m	0.200 kg	20 kWh/1000h
307136	Thule LED Strip - 5.00 m	0.250 kg	25 kWh/1000h
307137	Thule LED Strip - 6.00 m	0.300 kg	30 kWh/1000h

THULE RECOMMENDS

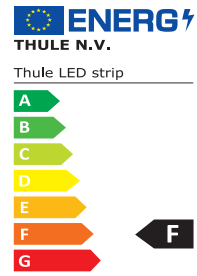


Thule LED Strip Sideways

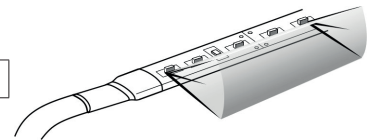


INFO

- Flexible black LED strip, delivered with high quality 3M tape on the back
- Working voltage 12 VDC
- Power consumption 340-380 mA per meter
- 60 power LEDs per meter
- 1 meter connection cable included:
NOTE: In combination with Thule Tent LED Mounting Rail TO 6300/6200 (301664) is the connection cable on the right side
- Warm white light with light starkness up to 300 Lumen
- Suitable for outdoor usage: waterproof IP65
- Can be shortened each 5 cm (possible to solder cables on cutting points)
- Can be taped on most standard even materials and surfaces
- Can also be used inside the vehicle to create more light
- CCT = 4000K
- Width: 8 mm
- Length: 4.00 m
- Colour: anthracite



301660	Thule LED Strip Sideways - 4.00 m	20 kWh/10000h
--------	-----------------------------------	---------------



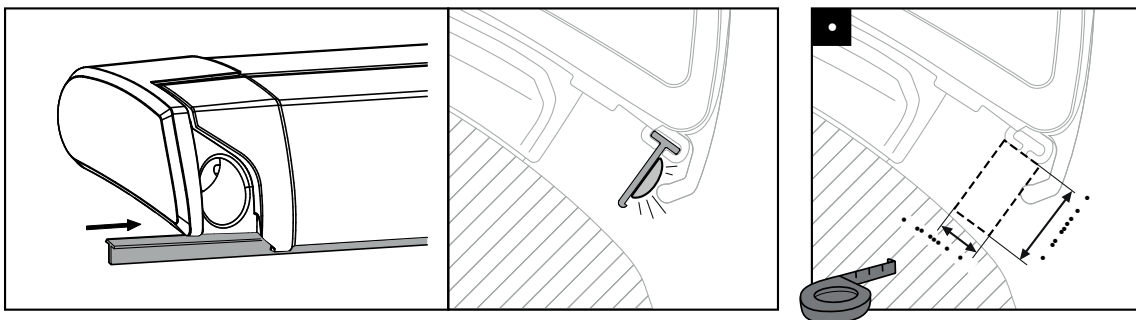
RELATED PRODUCT

- Thule Tent LED Mounting Rail TO 6300/6200 - 301664

Thule LED Mounting Rail TO 6300/6200/9200

INFO

- For the installation of a LED strip on roof awnings Thule Omnistor 6300 | 6200 | 9200
- An aluminum profile fits the opening in the bottom of the awning cassette
- The LED light can be used both when the awning is opened or closed
- Cannot be used with the Thule Awning Fixation Kit TO 6300/6200/9200 (307050)
- Content:
 - 6x 1.00 m (packed in a black cardboard tube)



THULE LED STRIP IN COMBINATION WITH THULE OMNISTOR ADAPTERS FOR ROOF MOUNTING

		Thule LED Mounting Rail possible	LED strip can be glued on bracket	LED strip can be glued on wall
Thule Adapters for Roof Mounting - Universal				
308097 308098 308099 308100 306799	Thule Adapter Roof Flat	DRS*		•
308054 308055	Thule Adapter Roof Mounting Rails			•
308299	Thule Adapter Roof Top	DRS*		•
Thule Adapters for Roof Mounting - Manufacturer Motorhome				
306794 306795 306796 306797	Thule Adapter Roof Auto-Sleepers >2013	•		
309892 309888 309889 309890 309891	Thule Adapter Roof Carthago Chic < 2014	•	•	
307250 307251 307252 307253 307254 301439	Thule Adapter Roof Carthago C-Line > 2014	•	•	
308078 308079 301417 301418	Thule Adapter Roof Carthago Malibu / Fendt > 2022	•		

* DRS = Depending on roof shape

		Thule LED Mounting Rail possible	LED strip can be glued on bracket	LED strip can be glued on wall
301902	Thule Adapter Roof Hobby Optima Deluxe / Premium LED	●		
308088 308089 308090 308091 306800	Thule Adapter Roof Hymer SX			●
306951 306952 306953 306954 306955 306956	Thule Adapter Roof Hymer 2013	●	●	
301998	Thule Adapter Roof Laika Ecovip	●		
301999	Thule Adapter Roof Laika Kreos	●		
307042 307043 307044 307045 307046 307049 307047 307048	Thule Adapter Roof LMC Liberty TI/TEC		●	
301473 301474 301475 301480 301476	Thule Adapter Roof LMC Explorer / Cruiser MJ2018	●		
302958	Thule Adapter Roof Mobilvetta 2024	●		
309944 301764 301765	Thule Adapter Roof Rapido Distinction	●	●	
301965 301966 301967	Thule Adapter Roof Rapido Serie Compact	●		
302932	Thule Adapter Roof Rapide Serie Compact Integral	●		
301412 301413 301414	Thule Adapter Roof Swift Escape 2017	●		

Thule Adapters for Roof Mounting - Manufacturer Caravan				
309982	Thule Adapter Roof Adria Caravan > 2015			●
306757 309957 309962 309958 309963 306807 309964 306809 307132 307133 309959	Thule Adapter Roof Caravan	●		
301945 301946 301947 301948 301949	Thule Adapter Roof Top Caravan LED		●	
301682	Thule Adapter Roof Eriba Touring 820		●	
309692	Thule Adapter Roof Fendt Brillant < 2021	●		
308663	Thule Adapter Roof Hobby Caravan 2009			●
309819	Thule Adapter Roof Hobby Premium/Ontour			●

		Thule LED Mounting Rail possible	LED strip can be glued on bracket	LED strip can be glued on wall
302935	Thule Adapter Roof Hobby Caravan 2024	●		
306951 306952 306953 306954 306955 306956	Thule Adapter Roof Hymer 2013 Nova	●	●	
307064	Thule Adapter Roof Kit LMC Caravan	●		

Thule Adapters for Roof Mounting - Manufacturer Van				
308058	Thule Adapter Roof Ducato Jumper Boxer 1994-2006	●		
301649 301650	Thule Adapter Roof Ducato Jumper Boxer > 2007	●		
308073	Thule Adapter Roof Mercedes Sprinter > 2007 VW Crafter 2007-2016	●		
301668	Thule Adapter Roof Mercedes Sprinter > 2007 VW Crafter 2007-2016 (OE Track)	●		
301768	Thule Adapter Roof VW Crafter 2017 MAN TGE 2017 (LHD)	●		
308059	Thule Adapter Roof Renault Master Opel Movano 1998-2010	●		
302923	Thule Adapter Roof Renault Master Opel Movano < 2022	●		
302966	Thule Adapter Roof Renault Master Opel Movano > 2024 L3H2	●		

RELATED PRODUCTS

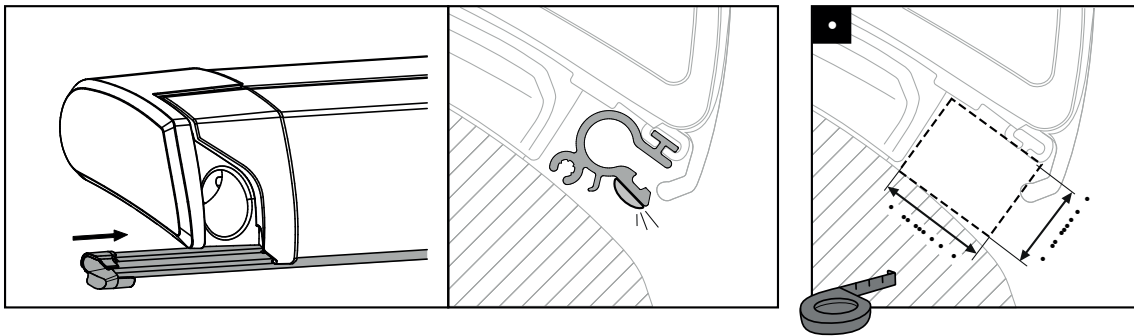
- Thule LED Strip 4.00 m - 307135
- Thule LED Strip 5.00 m - 307136
- Thule LED Strip 6.00 m - 307137

306777	Thule LED Mounting Rail TO 6300/6200/9200
--------	---

Thule Tent LED Mounting Rail TO 6300/6200

INFO

- This caravan profile can be slid at the bottom of roof awnings:
 - Thule Omnistor 6300 | 6200 mounted on a van
 - Thule Omnistor 6300 | 6200 | 9200 mounted on a motorhome, only if you have min. 24 mm depth and min. 17 mm height (see figure)
- Makes it possible to have light on the outside even when the awning is closed
- Provided with a channel which makes it possible to install a Thule QuickFit tent or to hang up the Thule Organizers
- Fits only with the Thule Led Strip Sideways - not included
- Colour: anthracite
- Content:
 - 3 profiles (3x 1.30 m) to fit a 4.00 m awning length - can be cut to the required length
 - 2 end caps for a perfect finish



301664

Thule Tent LED Mounting Rail TO 6300/6200

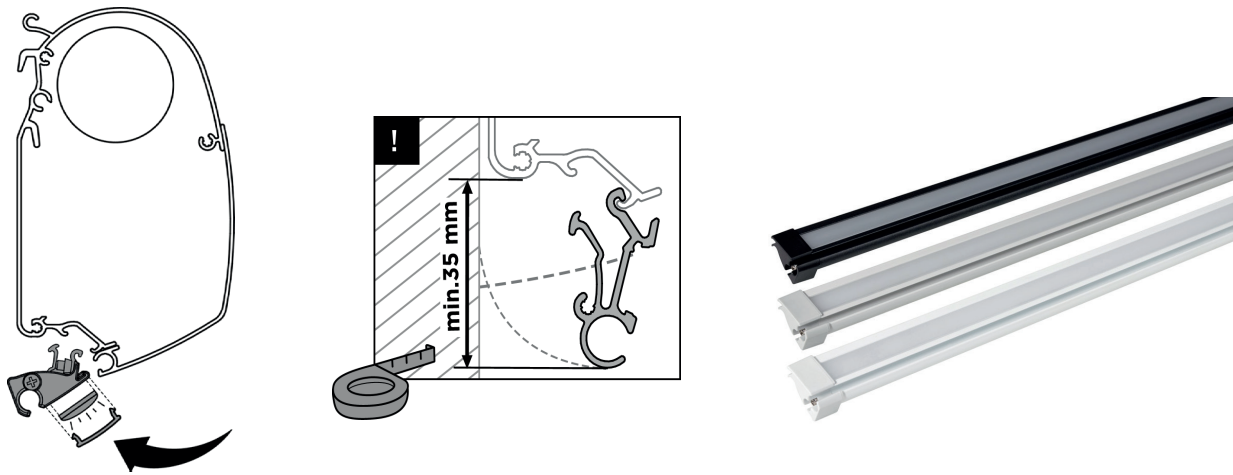
RELATED PRODUCT

- Thule LED Strip Sideways - 301660

Thule Tent LED Mounting Rail TO 5200

INFO

- This profile makes it possible to mount the Thule QuickFit tent on wall awning TO 5200
- The profile is clicked at the bottom of the awning cassette and is fixed with a hex wrench
- It covers the adapters and is provided with a channel to slide the tent in
- Additional space for a Thule LED Strip - to have light on the outside even when the awning is closed
- Available in different lengths and 3 colours: white, anodised and anthracite
- Content:
 - Aluminium caravan profile
 - 2 end caps
 - diffuse filter for the LED channel



LENGTH	WEIGHT WITHOUT LED	WEIGHT WITH LED	WHITE	ANODISED	ANTHRACITE
3.00 m	1.2 kg	1.4 kg	301250	301255	301260
3.50 m	1.4 kg	1.6 kg	301251	301256	301261
4.00 m	1.6 kg	1.8 kg	301252	301257	301262
4.50 m	1.8 kg	2 kg	301253	301258	301263
5.00 m	2 kg	2.2 kg	301254	301259	301278

RELATED PRODUCTS

- Thule LED Strip 4.00 m - 307135
- Thule LED Strip 5.00 m - 307136
- Thule LED Strip 6.00 m - 307137

Thule Tension Rafter G2

INFO

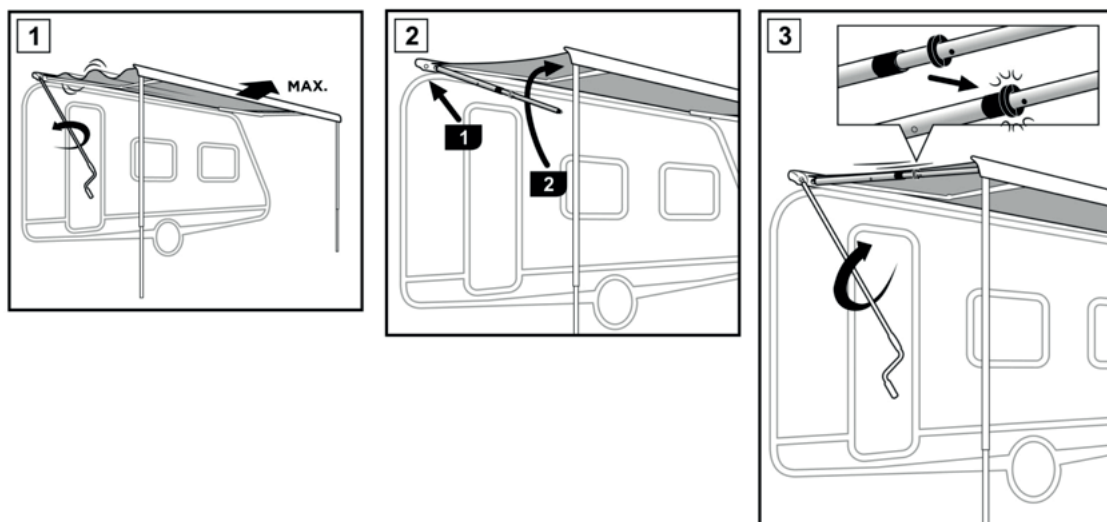
- Additional awning rafter to ensure an optimal tensioned awning fabric for increased wind resistance
- Innovative concept: optimal tension ensured by length lock system
- Improved awning fixation parts
- No heavy manpower needed for the installation
- Easy to use in only 3 simple steps:
 - Step 1: Open the awning completely
 - Step 2: Place the rafter into the awning. This is effortless due to the smooth integrated spring
 - Step 3: Slightly roll-up the awning fabric until it's blocked
- Length Lock can be set on different projections for a perfect combination with other Thule accessories (e.g. Smart Panels, awning tents)
- Made of durable materials: anodised aluminium in combination with high impact plastics



THULE TENSION RAFTER G2		
PROJECTION	AWNING TYPE	SKU NO
2.00 m*	TO 5200/4900/5003/5002/4200	307307
	TO 6300/6200/6002	307308
2.50 m	TO 5200/4900/5003/5002/4200	307309
	TO 6300/6200/6002	307310
	TO 1200**	307311
2.75 m	TO 8000/6900	307312
3.00 m	TO 9200	307313

*The rafter fits only at the side of the awning, not at the middle

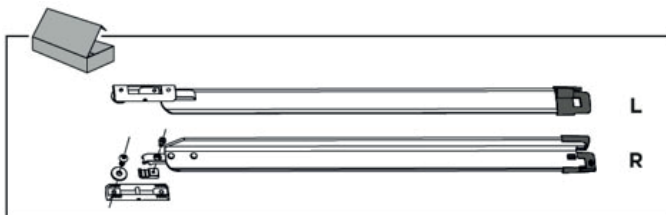
** The rafter can not be placed in case you add a Thule QuickFit tent to your TO 1200 awning



Thule Tension Arm Set TO 5200 V2

INFO

- Only suitable for wall awning Thule Omnistor 5200
- Sturdy spring arms with patented tension arms ensure a perfectly tensioned awning fabric and increase the wind-resistance
- Standard integrated for awning lengths from 4.02 m and more
- Optional for awning lengths 3.02 m and 3.52 m
- Content:
 - set of 2 tension arms



301659

Thule Tension Arm Set TO 5200 V2

Thule Tension Arm Set TO 6300

INFO

- Only suitable for roof awning Thule Omnistor 6300
- Sturdy spring arms with patented tension arms ensure a perfectly tensioned awning fabric and increase the wind-resistance
- Standard integrated for awning lengths from 3.75 m and more
- Optional for awning lengths 3.00 m, 3.25 m and 3.50 m
- Not suitable for awning length 2.60 m
- Content:
 - set of 2 tension arms



302095

Thule Tension Arm Set TO 6300

Thule Fabric Clamps

INFO

- Set of two clamps to avoid a flappy awning
- Provide a more secure fastening between the awning fabric and the tension or blocker rafter to prevent the unpleasant noise of a flapping awning fabric due to wind
- Just click it on the rafter, put the fabric in between and tighten with the handle
- Use up to two clamps on one side of the awning
- Fits:
 - the oval side blocker rafter
 - Thule Tension Rafter G2
 - the square telescopic tension rafter for Thule Omnistor 1200
- Content:
 - 2 clamps

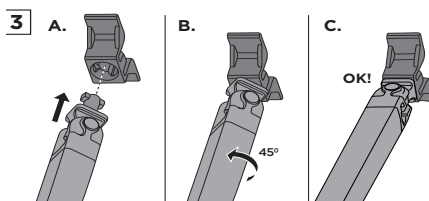


309698	Thule Fabric Clamps
--------	---------------------

Thule 3rd Support Leg

INFO

- To reinforce the longer lengths of awning tents Thule Panorama and Thule Residence G2 | G3 in combination with a rafter
- Not suitable to use in combination with awning tent Thule QuickFit
- Can be installed on all awning types from 3.75 m length on, with the exception of the Thule 4200
- Content:
 - 1 support leg



306778	Thule 3rd Support Leg
--------	-----------------------

Thule Hold Down Kit

INFO

- Prevents the awning and tent from flying up
- Installed over the entire length between the spring arms and the fabric
- For any type of awning and tent up to and including 6 m
- Not suitable to use in combination with awning tents Thule Panorama, Thule Residence G2 | G3 and Smart Panels
- Content:
 - 1 black strap (11 m)
 - installation material
 - supports
 - storage bag
 - pegs



307906	Thule Hold Down Kit
--------	---------------------

Thule Hold Down Side Strap Kit

INFO

- Prevents the awning and tent from damage due to high wind or storm
- Attached to the support legs of Thule Omnistor awnings in order to prevent damage to the fabric
- Can easily be used in combination with a Thule awning tent and Smart Panels
- Content:
 - 2 black straps (both 3.00 m)
 - installation material
 - supports
 - storage bag
 - pegs



307916	Thule Hold Down Side Strap Kit
--------	--------------------------------

Thule Motor Kit TO 5200

INFO

- 12 VDC motor for wall awning Thule Omnistor 5200
- Retrofit installation: by replacing the gearbox of a manual TO 5200 awning (only for awning lengths from 3.02 m and more)
- The motor is pre-installed on a limited range:
 - awning lengths from 3.00 m to 5.00 m
 - fabric finish Mystic Grey 31
- Easy operation:
 - one-touch switch to start the motor
 - motor stops automatically when awning is fully opened or closed
 - Auto-Tension: motor retracts in open position
- Integrated manual override with hand crank in case of power failure
- Motor with thermal protection
- EMC approved
- Reverse polarity and short circuit protected
- Comes with a relay in order to prevent that the awning can be operated while driving
- Only 1 kg additional weight compared to a manual awning
- Same design as a manual awning with only 3cm additional length
- Different colours available: white, anodised and anthracite
- Consumption: out 3A / in 7A / peak 17A
- Noise level: 65 dBA



301296	Thule Motor Kit TO 5200 - White
301297	Thule Motor Kit TO 5200 - Anodised
301298	Thule Motor Kit TO 5200 - Anthracite

*The voltage should retain a minimum of 12V at the power source.

If due to the cable length, the resulting voltage at the motor drops below 9V at peak usage of 20.5A, the motor might stall. Thule advises to use $\varnothing 4 \text{ mm}^2$ (AWG 11) copper wiring instead of $\varnothing 2.5 \text{ mm}^2$ (AWG 13) when the connecting cable length exceeds 10 meters.

Thule Motor Kit TO 6300

INFO

- 12 VDC motor for Thule Omnistor 6300 awning
- Retrofit installation: by replacing the gearbox of a manual TO 6300 awning
- Pre-installed on a limited range:
 - awning lengths from 3.00 m to 5.00 m
 - fabric finish Mystic Grey 31
- Easy operation:
 - one-touch switch to start the motor
 - motor stops automatically when awning is fully opened or closed
 - Auto-Tension: motor retracts in open position
- Integrated manual override with hand crank in case of power failure
- Motor with thermal protection
- EMC approved
- Reverse polarity and short circuit protected
- Comes with a relay in order to prevent that the awning can be operated while driving
- Only 1 kg additional weight compared to a manual awning
- Same design as a manual awning with only 3 cm additional length
- Different colours available: white, anodised and anthracite
- Consumption: out 3A / in 7A / peak 17A
- Noise level: 65 dBA



302096	Thule Motor Kit TO 6300 - White
302097	Thule Motor Kit TO 6300 - Anodised
302098	Thule Motor Kit TO 6300 - Anthracite

*The voltage should retain a minimum of 12V at the power source.

If due to the cable length, the resulting voltage at the motor drops below 9V at peak usage of 20.5A, the motor might stall. Thule advises to use $\varnothing 4 \text{ mm}^2$ (AWG 11) copper wiring instead of $\varnothing 2.5 \text{ mm}^2$ (AWG 13) when the connecting cable length exceeds 10 meters.

Thule Motor Kit 230V EM - TO 8000/9200

SPECIFICATIONS

- Retrofit installation
- Easy to use
- Security operation

INFO

- 230 VAC EM (= electrical-mechanical limit switch) motor
- Includes remote control and control box
- A control box ensures that the awning cannot be opened whilst the vehicle is moving
- Simple connection to a 230 VAC supply (with a 12V connection you can use a 300 Watt inverter)
- Settings are set by an electrical limit switch (closed position) and a mechanical limit switch (open position) so that the frame always closes correctly
- The manual override can easily be done with a handcrank so that the awning can be operated at any time, even during a power failure
- Use an inverter which meets these specifications:
 - Input: 10-15 V DC
 - Output: 230 VAC/50Hz
 - Capacity: 300W permanent, 600W max
- The D+ connection is included in the control box
- Possibility to operate the motor unit by a wired switch connection*
- Measurements control box: 160x92x51 mm
- Cable length motor: 5 m
- Power supply: 3x 1,5 mm²
- EMC approved
- Motor with thermal protection

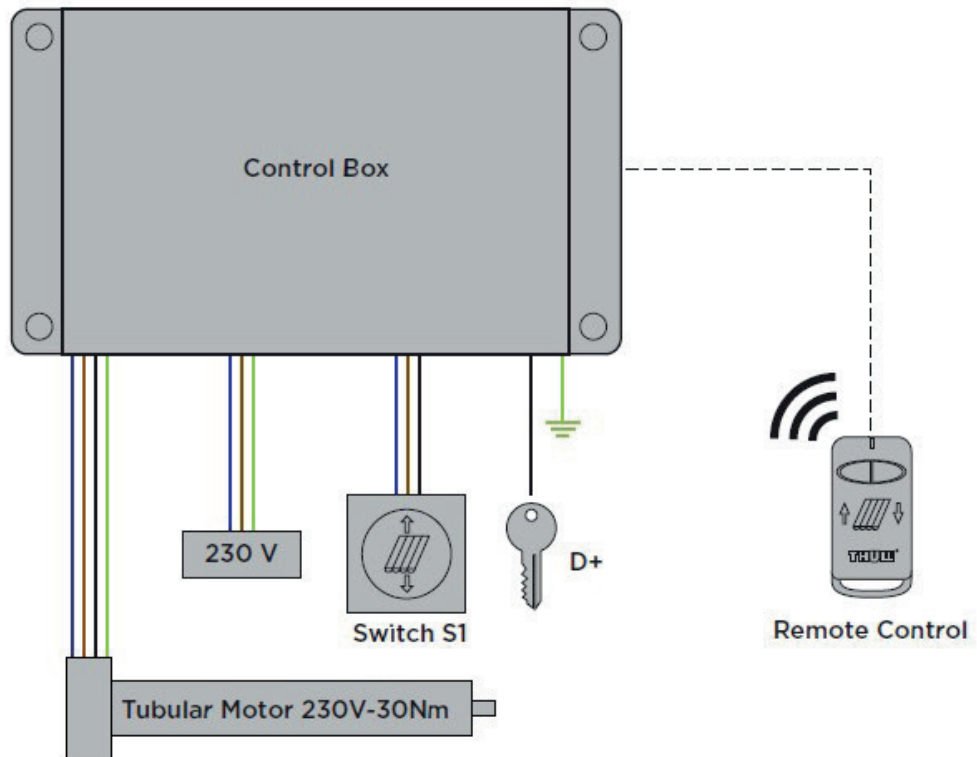


* Monostable switch required (ON)-OFF-(ON)/ (NC)-NO-(NC)

Awning will open completely with one touch

THULE OMNISTOR 8000	
302645	Thule Motor Kit TO 8000 - White
302646	Thule Motor Kit TO 8000 - Anodised
302647	Thule Motor Kit TO 8000 - Cream
302648	Thule Motor Kit TO 8000 - Anthracite

THULE OMNISTOR 9200	
302685	Thule Motor Kit TO 9200 - White
302686	Thule Motor Kit TO 9200 - Anodised
302687	Thule Motor Kit TO 9200 - Cream
302688	Thule Motor Kit TO 9200 - Anthracite



THULE TUBULAR MOTOR EM-230V TECHNICAL SPECIFICATIONS

Supply	230V AC / 50 Hz
Rated Power	191 W
Maximum Power	400 W
Current	0.83 A
Rated Torque	30 Nm
Rated Speed	15 rpm
Mechanical Limit Setting	✓
Emergency Manual Operation	✓

THULE CONTROL BOX TECHNICAL SPECIFICATIONS

Supply	230 V AC / 50 Hz
Maximum Voltage	264 V AC
Sleep Consumption	1.05 W
Storage Temperature Range	-40°C to +70°C
Operation Temperature Range	-25°C to +70°C
IP classification	IP 32
Noise	< 70 dB (A)
Fuse	T 3.15 A H 250 V
D+ IN	12 V - 30 V DC

THULE REMOTE CONTROL TECHNICAL SPECIFICATIONS

Frequency	434 MHz
Range	up to 200 m
Battery	CR 2032

INVERTER - MIN. 300 W TECHNICAL SPECIFICATIONS

IN	10 V - 15 V DC / 20 V - 30 V DC
OUT	230 V AC / 50 Hz
Wave Shape	Pure Sine Wave
Power	300 W (continuously)
Peak Output Power	600 W
Protection Function	✓

Thule Sealing Rubber

INFO

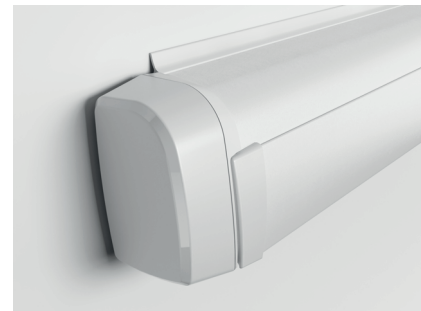
- Ensures that the gap between the vehicle and the wall awning is sealed
- Can be cut to the exact length that is required

THULE OMNISTOR 5200 5003 8000		
SKU NO	WIDTH	LENGTH
307904	8 cm - Large	30.00 m
307961	8 cm - Large	4.00 m
307901	5 cm - Small	30.00 m
307960	5 cm - Small	4.00 m



For TO 5200 | 5003 | 8000

THULE 4200	
SKU NO	
306891	Thule Sealing Rubber T 4200 / TO 4900 - 30.00 m
302690	Thule Sealing Rubber T 4200 - 4.50 m white
302691	Thule Sealing Rubber T 4200 - 4.50 m anthracite
302692	Thule Sealing Rubber T 4200 - 125 m white
302693	Thule Sealing Rubber T 4200 - 125 m anthracite



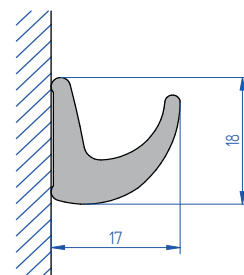
For T 4200

Thule Gutter

INFO

- Self-adhesive drainage system
- Fits just below the awning
- Fits most caravans and motorhomes
- Content:
 - 1 gutter

SKU NO	WIDTH	HEIGHT	LENGTH
307947	17 mm	18 mm	3.50 m
307900	17 mm	18 mm	30.00 m
307967	17 mm	18 mm	4.50 m



Thule EPDM Sealing

INFO

- Seals the gap between the vehicle and roof awning (TO 9200/6300/6200)
- Made from black EPDM foam with closed cell structure
- Thickness: 18 mm or 25 mm
- Width: 30 mm
- Self-adhesive
- Content:
 - 2x 2.00 m



308697	Thule EPDM Sealing Profile for Roof awnings - 25mm
302435	Thule EPDM Seal Profile for Roof awnings - 18mm



Thule PVC Cleaner

INFO

- An easy to use cleaner for PVC, awning fabric and other plastic materials
- Supplied in a user-friendly spray bottle
- Protects by applying a water-repellent and anti-static film
- Usage instruction: spray on the surface, rub with a damp cloth, rinse with clean water and let dry
- Composed with anionic (< 0,5%) and non-ionic (< 0,5%), biodegradable detergent
- Contains no abrasive or aggressive components
- Keep bottle out of children's reach
- Content:
 - Spray bottle (500 ml)

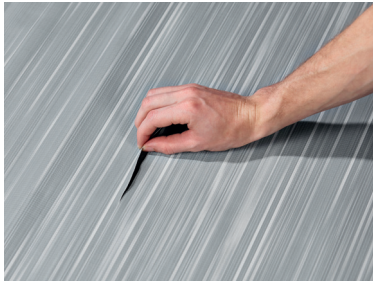


307585	Thule PVC Cleaner (per 24 pcs)
--------	--------------------------------

Thule Repair Patch

INFO

- To repair small holes in the awning or tent fabric
- Self-adhesive, transparent patches
- Dimensions: 7,5 x 15 cm
- Content:
 - 3 patches



306486

Thule Repair Patch

